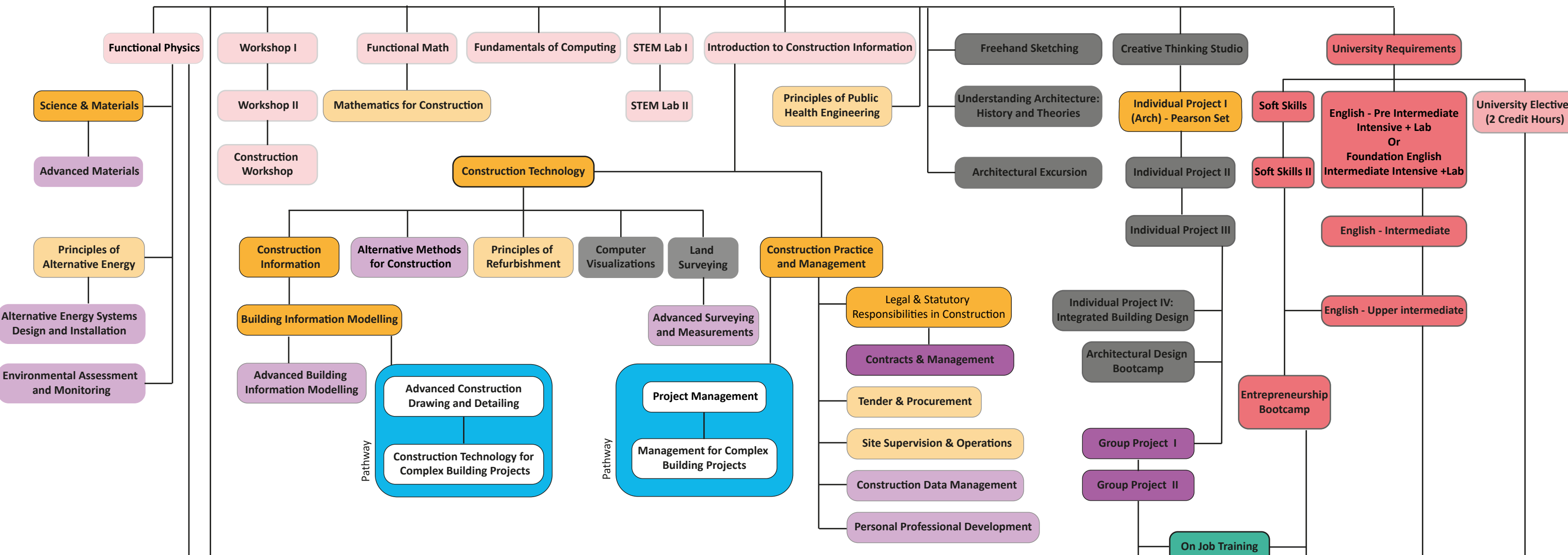
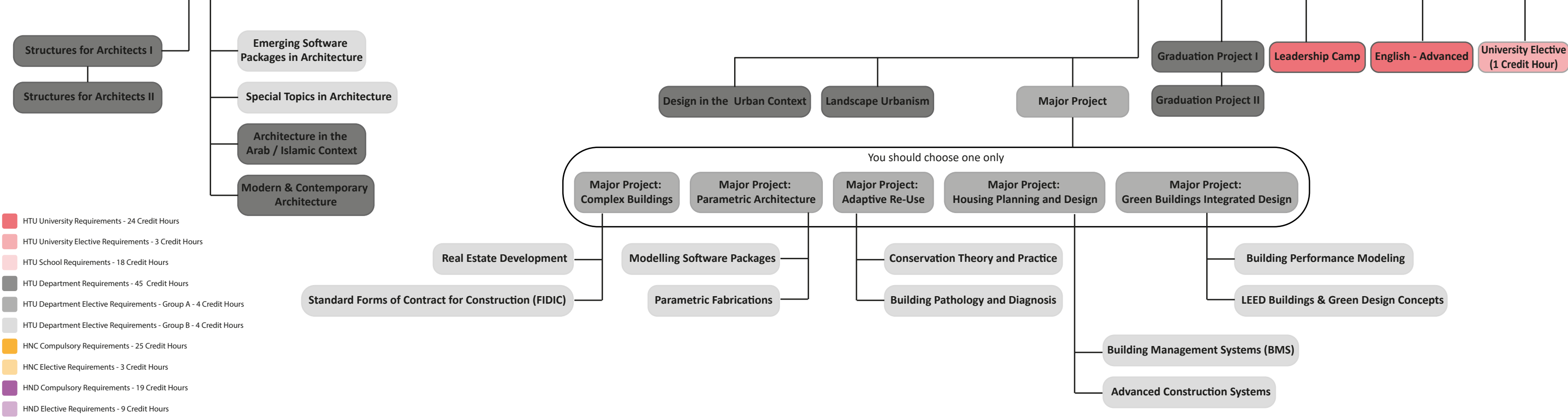


Architecture Engineering



BSc Progression



- HTU University Requirements - 24 Credit Hours
- HTU University Elective Requirements - 3 Credit Hours
- HTU School Requirements - 18 Credit Hours
- HTU Department Requirements - 45 Credit Hours
- HTU Department Elective Requirements - Group A - 4 Credit Hours
- HTU Department Elective Requirements - Group B - 4 Credit Hours
- HNC Compulsory Requirements - 25 Credit Hours
- HNC Elective Requirements - 3 Credit Hours
- HND Compulsory Requirements - 19 Credit Hours
- HND Elective Requirements - 9 Credit Hours
- Compulsory Specialist Units - 8 Credit Hours
- Placement in Industry Requirements - 18 Credit Hours